



Regional Economic Profile EKCEP FOCUS, Kentucky

139,212

Total Population,
2017

+0.7%

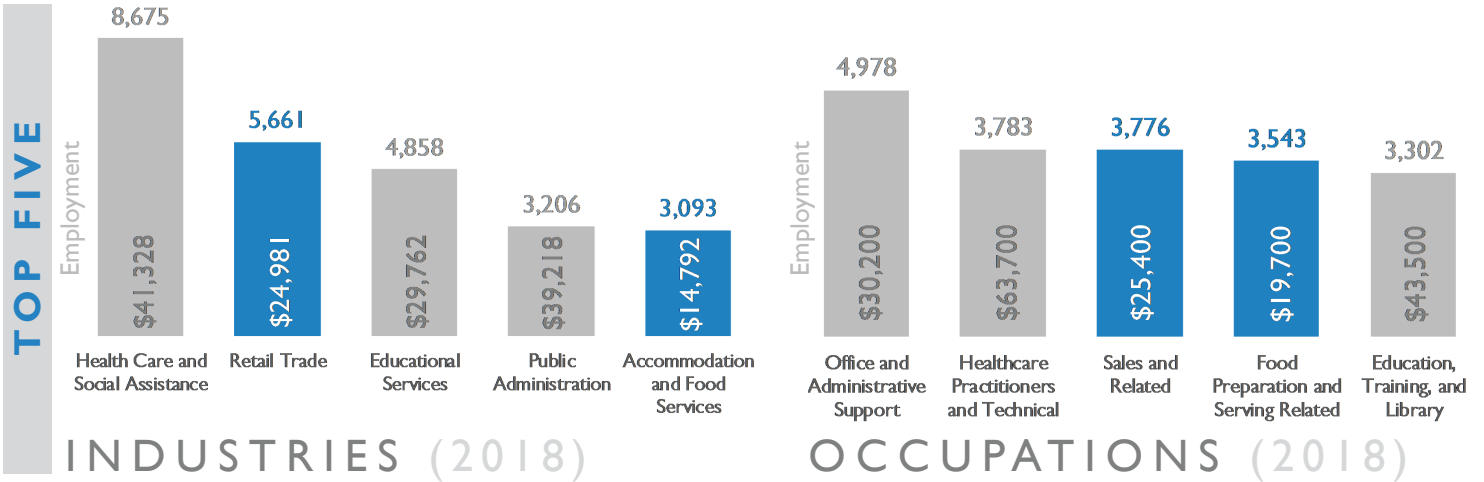
Population Growth,
2017-2022

39.8%

2018 Labor Force Participation Rate

59.2%

Kentucky



TOP 3 INDUSTRY SUBSECTORS (2018)

Employment Average Annual Wages

RETAIL TRADE

General Merchandise Stores, including Warehouse Clubs & Supercenters	1,201	\$23,295
Supermarkets & Other Grocery (except Convenience) Stores	1,137	\$18,453
Pharmacies & Drug Stores	645	\$39,615

ARTS & ENTERTAINMENT

Nature Parks & Other Similar Institutions	94	\$34,738
Independent Artists, Writers & Performers	22	\$34,225
Spectator Sports	12	\$18,393

ACCOMMODATION & FOOD SERVICES

Restaurants & Other Eating Places	2,784	\$13,831
Hotels (except Casino Hotels) and Motels	209	\$19,969
Food Service Contractors	74	\$20,708

TOURISM

Amusement & Theme Parks	21	\$17,339
Golf Courses & Country Clubs	20	\$17,738
All Other Amusement & Recreation Industries	17	\$14,145

Data Source: JobsEQ



COMMUTING PATTERNS (2015)

35,084 work in the region

36,799 live in the region



IN-COMMUTERS
18,776



WORK & LIVE IN REGION
16,308



OUT-COMMUTERS
20,491

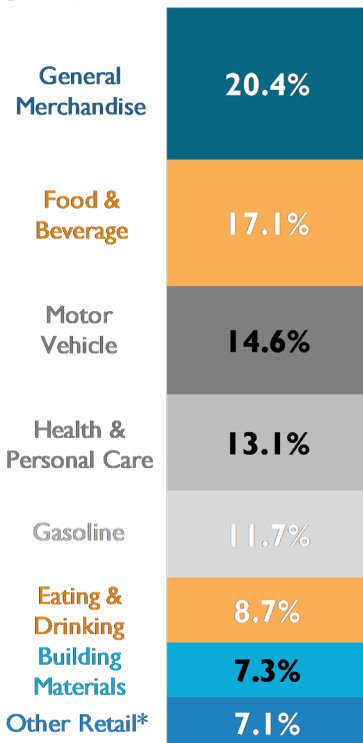
In your region, the highest percentage of workers are most likely:

- Workers ages 30-55 (58%)
- Workers earning between \$15K - \$40K income (42%)
- Workers in all other services (64%)
- Workers ages 30-55 (58%)
- Workers earning between \$15K - \$40K income (46%)
- Workers in all other services (72%)
- Workers ages 30-55 (57%)
- Workers earning between \$15K - \$40K income (45%)
- Workers in all other services (57%)

Data Source: On the Map

RETAIL SALES (2018)

\$1,506 millions



Data Source: Woods & Poole

*Other Retail includes: Clothing (2.1%), Miscellaneous (1.8%), Nonstore (1.3%), Furniture (0.9%), Sporting Goods (0.6%), and Electronics (0.4%)

SALES TAX (2016)

Industry	Sales tax revenues
Services	\$10,035,003
Food & Beverage	\$4,681,975
Automotive	\$1,422,456
Furniture & Fixture	\$846,988
Construction	\$813,622
General Merchandise	\$763,640
Manufacturers	\$703,304
All Other (Miscellaneous, Utilities, Apparel)	\$1,376,790
Total for the Region	\$19,802,136

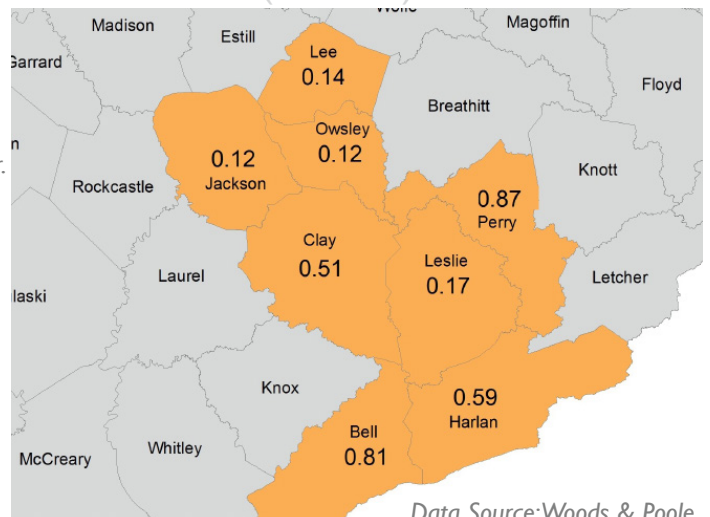
Data Source: Kentucky Division of Sales and Use Tax

PULL FACTORS (2018)

A Pull Factor (PF) measures a county's ability to attract shoppers in the retail sector.

PF > 1: the county is pulling retail shoppers from another county.

PF < 1: the residents are shopping in another county.



Data Source: Woods & Poole